



<http://kentarchaeology.org.uk/research/archaeologia-cantiana/>

Kent Archaeological Society is a registered charity number 223382

© 2017 Kent Archaeological Society

## CHURCH PLATE IN KENT, No. IV.\*

BY THE REV. C. E. WOODRUFF, M.A.

## DEANERY OF SANDWICH.

THE Deanery comprises twenty-eight parishes, three of which, however, possess neither Church nor Church Plate, viz., Little Mongeham, Oxney, and Stonor. Seven parishes retain their Elizabethan chalices: Barfreston, Eythorne, East Langdon, St. Mary's Walmer, St. Clement's Sandwich, Woodnesborough, and St. Bartholomew's Hospital at Sandwich. Of these, the first four belong to the year 1562. But the two vessels of most interest are the pre-Reformation paten at St. Mary's, Walmer, ascribed by Messrs. Fallow and Hope to *circa* 1485, and the tazza-shaped cup at St. Mary's, Sandwich, which was probably made in the first quarter of the sixteenth century. Other vessels of especial interest are the Laudian chalice at Knowlton, made in 1641, and the elaborately embossed alms-dish at Ringwould, which belongs to the "restoration" period (1669).

My sincere thanks are due, and are now offered, to all the incumbents in the Deanery who have kindly co-operated with me in making this inventory. But my especial thanks are due to the Rev. Canon D. B. Payne, the Rev. M. Baynes, and the Rev. S. G. H. Sargent for the photographs from which the plates illustrating the vessels in their Churches are taken.

---

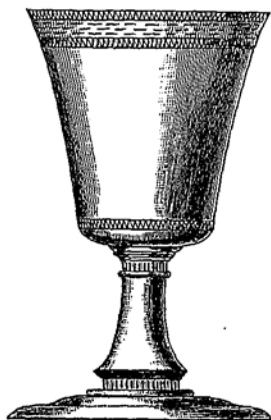
\* Continued from *Archæologia Cantiana*, Vol. XXVII., p. 300.

## BARFREESTON,\* ST. MARY.

1. *A Chalice of Silver.* Height,  $5\frac{1}{4}$  inches; diameter of mouth  $3\frac{1}{4}$  inches, of foot  $3\frac{3}{8}$  inches; weight,  $6\frac{1}{2}$  ozs.

No plate marks.

This is an Elizabethan cup, ascribed by the late Canon Scott Robertson to the year 1562. The deep bell-shaped bowl is ornamented around the lip with a belt of hyphens between parallel fillets filled in with zig-zags; a narrow fillet, similarly chased, surrounds the base of the bowl. The stem, which is without knop and somewhat trumpet-shaped, is united to the bowl by a reeded moulding and three simple mouldings. Similar mouldings mark the junction of the stem with the foot, which is plainly moulded and somewhat flat. The cup has been repaired by the insertion of a small piece of silver  $\frac{3}{4}$  of an inch long and  $\frac{1}{8}$ th of an inch wide in the lip.



2. *A Paten-cover of Silver.* Height,  $1\frac{1}{2}$  inches; diameter,  $3\frac{1}{2}$  inches; weight, 2 ozs.

No plate marks.

Engraved upon the button, "1577."

3. *An Alms-dish of Electro-plate.*

Given in 1867 by the Rev. E. Austen, Rector of the Parish.

4. *An Alms-dish of Pewter.* Diameter, 9 inches.

## BETTESHANGER,† ST. MARY.

1. *A Chalice of Silver.* Height, 10 inches; diameter of mouth  $4\frac{1}{8}$  inches, of foot 4 inches; depth of bowl,  $4\frac{3}{4}$  inches; weight, 14 ozs. 5 dwts.

London Hall Marks of the year 1729. Maker's mark, T.L., in a circular stamp (Timothy Ley).

\* See *Archæologia Cantiana*, Vol. XVII., p. 259.

† See *Archæologia Cantiana*, Vol. XVII., pp. 272—274.

Inscribed in script on the bowl, "Belonging to the Parish of Betteshanger, 1730."

The bell-shaped bowl has a ribbed moulding somewhat below its centre. The baluster stem and foot are modern, having been added in 1853.

2. *A Paten-cover of Silver.* Height, 2 inches; diameter,  $5\frac{1}{2}$  inches; weight, 5 ozs. 5 dwts.

Marks the same as on the bowl of No. 1.

3. *A Paten of Silver.* Diameter, 6 inches; height, 2 inches; weight, 6 ozs. 3 dwts.

London Hall Marks of the year 1712 (higher sterling). Maker's mark, P.E., with a mullet above and below the letters (William Penstone of Foster Lane, Cheapside).

Inscribed on the reverse, "Given to the Church of Bettishanger 1712, Salmon Morrice, Esq<sup>re</sup>." Also engraved upon the centre of the face the initials S.E.M. linked.

The donor of this paten was Admiral Salmon Morrice, who purchased the manor of Great Betshanger, and rebuilt the mansion-house in the reign of George I. He died in 1740, leaving by his wife Elizabeth, the daughter of William Wright, Esq., one surviving son, William Morrice.

4. *A Flagon of Silver.* Height, 9 inches; diameter of mouth  $1\frac{1}{2}$  inches, of foot  $3\frac{1}{2}$  inches; weight, 14 ozs. 10 dwts.

London Hall Marks of the year 1858.

Inscribed on the bulb, "Glory + Be + To + God + on + High."

A jug-shaped vessel with a spout, hinged lid, and thumb-piece shaped like an open loop of twisted cable, a small ornamental handle terminating near the top of the bulb with a *fleur-de-lis*.

Presented by Sir Walter James (first Lord Northbourne) in 1858.





The following presentments of Churchwardens occur in the *Comperta et Detecta* books of the Archdeacon's Court :—

1562. "They have neither chalice or communion cup, but are fain to borrow one when they have any communion."

1571. "That they had a certain cup which was in Tilmanstone, but where it is they cannot tell, and that they lack a communion cup."

1578. "They lack a communion cup with a cover of silver."

1630. Among other things required: "Also a pewter pot or flagon."\*

### DEAL, ST. GEORGE.

1. *A Chalice of Silver.* Height,  $6\frac{5}{16}$  inches; diameter of mouth  $3\frac{1}{8}$  inches, of foot  $3\frac{5}{16}$  inches; weight, 7 ozs.

London Hall Marks of the year 1773. Maker's mark obliterated.

The plain egg-shaped bowl is gilt inside, and inscribed, "The Gift of the Rev<sup>d</sup> P. Brandon, Curate | For the use of St George's Chapel | Lower Deal | 1787." The stem has a small knop, ornamented with a cable moulding, and the outer edge of the circular foot is gadrooned.

2. *A Chalice of Silver.*

A duplicate of the last.

Philip Brandon, B.C.L., of Magdalen Hall, Oxford, was Perpetual Curate of St. George's from 1786 to 1814.

3. *A Chalice of Silver, gilt.* Height,  $7\frac{1}{8}$  inches; diameter of mouth  $3\frac{1}{8}$  inches, of foot  $4\frac{1}{16}$  inches; weight,  $14\frac{1}{2}$  ozs.

London Hall Marks of the year 1891. Makers' mark, W.K. (Keith and Co.).

The elliptical bowl is set in a calyx of chased leaves of *applique* work. The hexagonal stem is ornamented with a diaper pattern, and has a large knop, having six pierced quatrefoils. The foot is sexfoil, with points of triangles between the lobes, and has a small Latin cross in relief on one of its compartments.

This cup was purchased by subscription at the same time as No. 7.

4. *A Chalice of Silver, gilt.* Height, 13 inches to top of cross on cover; diameter of mouth 3 inches, of foot 4 inches. The hollow foot is weighted.

\* Kindly communicated by Mr. Arthur Hussey.



CHALICE, ST. GEORGE'S, DEAL.

No marks.

This is a remarkable vessel of foreign workmanship. The small bell-shaped bowl is ornamented with *repoussé* work, consisting of a calyx of leaves at its base, a band of bead-like ornament between cable mouldings, and festoons of flowers between framed oval pendants. The same ornament is repeated on the large pear-shaped knop of the tall stem, on the foot and lid. The latter is surmounted by a Latin cross, set in a small wreath of leaves with upturned points. A similar wreath of leaves, with their points turned down, marks the junction of the bowl and stem. The cross was added by the present Rector; the finial originally was formed of upturned leaves.

5. *A Paten of Silver.* Height,  $2\frac{1}{2}$  inches; diameter  $7\frac{7}{8}$  inches, of foot  $3\frac{1}{2}$  inches; weight, 14 ozs.

London Hall Marks of the year 1863. Maker's mark, S.H., in a two-lobed stamp.

A plain round plate, with a moulded edge, on a central foot.

6. *A Paten of Silver.*

A duplicate of the last.

7. *A Paten of Silver, gilt.* Diameter,  $6\frac{1}{2}$  inches; weight,  $4\frac{1}{2}$  ozs.

London Hall Marks of the year 1891. Maker's mark, S.H.

8. *A Flagon of Silver.* Height, 13 inches; diameter of mouth  $4\frac{3}{4}$  inches, of foot 7 inches.

London Hall Marks of the year 1730. Maker's mark indistinct, T. and perhaps E., with a rose or mullet between pellet under the letters, and some object above.

This is a very massive and heavy tankard-shaped vessel. The finial to the domed lid, and the spout, were added in 1863, and bear the hall marks of that year. Inscribed on the drum, "Purchased by the Chapel Stock for the use of the Chapel at Deal | in the County of Kent, Peter Stone, Esq<sup>r</sup>, Mayor; Nicholas Carter, D.D., Curate | Josiah Lane and Thomas Middleton, Chapel Wardens, Anno Dom. 1730."

St. George's Chapel, Lower Deal, was commenced in the year 1707 with funds raised by the subscriptions of the inhabitants, but these proving insufficient the Chapel remained unfinished for several years. In 1712 an Act of Parliament was obtained which granted a duty of 2s. per chaldron on all coal brought into the town towards the building of the Chapel, which was completed in the year 1716.

The total cost appears to have been about £2,554, and of this sum £18 15s. 4d. was spent in purchasing "Plate for the Communion." None of the plate then acquired appears to have survived to the present day. Dr. Nicholas Carter was the father of the learned Miss Elizabeth Carter, perhaps best known for her friendship with Dr. Samuel Johnson.

### DEAL, ST. ANDREW.

1. *A Chalice of Silver.* Height,  $7\frac{1}{2}$  inches; diameter of mouth 4 inches, of foot 5 inches; weight, 17 ozs.

London Hall Marks of the year 1869. Maker's mark, I.K., in oblong stamp.

Plain shallow hemispherical bowl, on an hexagonal stem divided by large knop, ornamented with six raised circular studs. The sacred monogram is engraved upon the bowl and sexfoil foot.

2. *A Paten of Silver.* Diameter,  $6\frac{1}{2}$  inches; weight, 7 ozs.

Marks: Lion passant, leopard's head uncrowned. Makers' mark, I.B. over F.W.

3. *A Chalice of Silver, gilt.* Height,  $7\frac{1}{2}$  inches; diameter of mouth 4 inches, of foot 5 inches; weight, 15 ozs.

London Hall Marks of the year 1876. Maker's mark, I.K.

This cup resembles No. 1, but the knop and foot are jewelled. A crucifix is engraved on one sexfoil of the foot, and the sacred monogram on the opposite sexfoil. The bowl bears a cross within a circle.

4. *A Paten of Silver.* Diameter,  $6\frac{1}{2}$  inches; weight, 6 ozs.

### DEAL, ST. LEONARD.

1. *A Chalice of Silver.* Height,  $9\frac{1}{8}$  inches; diameter of mouth  $4\frac{1}{8}$  inches, of foot  $4\frac{1}{4}$  inches; weight, 18 ozs.

London Hall Marks of the year 1714 (higher sterling). Maker's mark, Ne., in a shaped punch (John Newton, probably); entered 1711.

Inscribed in script on the bowl, "Given by y<sup>e</sup> Parishioners in exchange for a Lesser to y<sup>e</sup> Parish Church of Deal, Kent | Will.

Colnett, D.D., Rector, July An<sup>o</sup> Dom. 1714, Tob. Bowles, Esq., Mayor, Jno. Kingsford, Jno. Baynes, Churchwardens."

A plain cup with deep conical bowl and moulded lip. The stem is equally divided by an oval knop, surrounded by a plain round moulding.

2. *A Paten of Silver.* Height, 3 inches; diameter 9 $\frac{3}{8}$  inches, of foot 4 inches; weight, 21 ozs.

London Hall Marks of the year 1713 (higher sterling). Maker's mark, Ne., as on the last.

3. *A Flagon of Silver.* Height, 11 $\frac{1}{4}$  inches; diameter of mouth 3 $\frac{3}{4}$  inches, of foot 4 $\frac{1}{2}$  inches; weight, 59 ozs.

The marks are the same as on No. 1.

This is a very massive ewer-shaped vessel. A raised flat belt runs round the lower part of the bulb. The hinged lid is domed, surmounted by a round finial, but has no billet; the spout is very small.

The same inscription appears on the lower part of the bulb as on No. 1, with the addition of the words, "Given partly by subscription and partly by Free Gift (*sic*) | To the Parish Church of Deal in y<sup>e</sup> County of Kent | Nov<sup>r</sup> 15, 1714."

4. *A Paten-cover of Silver.* Height, 1 $\frac{1}{2}$  inches; diameter 5 $\frac{1}{2}$  inches, of foot 2 $\frac{1}{2}$  inches; weight, 8 ozs.

The marks and inscription are the same as on No. 1.

William Colnett, S.T.P., was Rector of Deal from 1711 to 1716, when he was appointed Rector of St. Mary Magdalene, Old Fish Street, in the City of London, which he held until 1721, when he was become Vicar of St. Lawrence Jewry. He died in the year 1729.

5. *A Chalice of Silver.* Height, 8 $\frac{1}{16}$  inches; diameter of mouth 4 inches, of foot 3 $\frac{3}{4}$  inches; weight, 12 ozs.

London Hall Marks of the year 1863.

The plain wine-glass-shaped bowl is gilt inside, and the sacred monogram, etc., is engraved on its side. The stem has a plain round knop. Inscribed: "Purchased for the use of Upper Deal Church | in exchange for two small Alms Basins | Feb. 1864 | T. LL. Griffith, Rector | Geo. Fry, Edw<sup>d</sup> Hobday, Churchwardens."

The Rev. Thomas Llewelyn Griffith, M.A., of University College, Oxford, was Rector of Deal from 1862 to 1905.

---

## EASTRY, ST. MARY THE VIRGIN.

1. *A Chalice of Silver.* Height,  $8\frac{2}{10}$  inches; diameter of mouth  $3\frac{3}{4}$  inches, of foot  $3\frac{3}{4}$  inches; weight,  $15\frac{1}{2}$  ozs.

London Hall Marks of the year 1622. Maker's mark, T.F., in monogram.

The deep conical bowl has a slight lip, and is supported by a stem equally divided by a plain oval knob. The foot is convex.

2. *A Paten-cover of Silver.* Height,  $1\frac{3}{4}$  inches; diameter  $4\frac{3}{8}$  inches, of foot 2 inches; weight,  $4\frac{3}{4}$  ozs.

Marks the same as on the Chalice.

3. *A Paten of Silver, with foot.* Height, 2 inches; diameter  $8\frac{1}{4}$  inches, of foot 3 inches; weight,  $8\frac{3}{4}$  ozs.

London Hall Marks of the year 1700 (higher sterling). Maker's mark, A.N. (William Andrewes).

Plain, with gadrooned edge and foot.

4. *A Flagon of Silver.* Height,  $15\frac{1}{2}$  inches; diameter of mouth  $4\frac{1}{2}$  inches, of foot  $7\frac{1}{2}$  inches; weight, 87 ozs.

London Hall Marks of the year 1718. Maker's mark, Ne. (Anthony Nelme).

A large straight-sided tankard of the usual type, with domed lid, thumb-piece, scroll handle, and spreading foot. Inscribed on the drum, within a pattern of floriated scroll-work, "Deo Servatori," and on the foot, "Eastry, 1718." | The above vessels were presented to the Church by the Rev. Drue Astley Cressener, M.A., Vicar 1698—1746 (Shaw's *Memorials of Eastry*, p. 86).

5. *An Alms-basin of Wood, on a Silver foot.* Height,  $3\frac{1}{4}$  inches; diameter  $7\frac{1}{2}$  inches, of foot  $3\frac{1}{2}$  inches.

London Hall Marks of the year 1835. Makers' mark, C.R. over G.R., in a four-lobed stamp.

Inscribed round the foot, "DEO ET ECCLESIE CHRISTI. AD. MDCCCXXXV."

The beechwood bowl is stained black.

6. *An Alms-basin of Wood, on a Silver foot.*

A duplicate of the last.

These alms-basins were presented to the Church by the Rev. George Randolph, M.A., Vicar, 1821—1841.

7. *A Chalice of Silver* (P). Height,  $7\frac{1}{8}$  inches; diameter of mouth  $3\frac{1}{2}$  inches, of foot  $3\frac{3}{8}$  inches; weight, 20 ozs.

No marks.

The egg-shaped bowl is divided vertically into four panels, three of which are chased with flowers, and the fourth bears a Latin cross.

### EYTHORNE, SS. PETER AND PAUL.

1. *A Chalice of Silver*. Height,  $5\frac{7}{8}$  inches; diameter of mouth  $3\frac{1}{2}$  inches, of foot  $3\frac{3}{8}$  inches; depth of bowl, 4 inches. The weight could not be taken as the foot is filled in with lead.

London Hall Marks of the year 1562. Maker's mark obliterated.

The deep bell-shaped bowl is plain, with the exception that it is inscribed "Eythorn," within a label. There is practically no stem, the foot swelling out from the base of the bowl. The only ornament is a small reed moulding on the upper part of the slightly convex foot, and beneath the bowl.

2. *A Paten-cover of Silver*. Height,  $1\frac{1}{8}$  inches; diameter,  $3\frac{1}{2}$  inches; weight, 3 ozs.

No marks.

Inscribed on the reverse of the foot or button, "Eythorn, 1577," between two palm (?) branches.

3. *An Alms-dish of Silver*. Diameter,  $10\frac{1}{2}$  inches; weight, 15 ozs.

London Hall Marks of the year 1836.

Inscribed on the inside, below a coat of arms, "Bequeathed To The Parish Church of Eythorne In Kent | To Be Used At the Celebration Of The Sacrament Of | The Lord's Supper | According To The Rites Of the Protestant Reformed Faith | Anno Dni 1836."

4. *A Paten of Silver*. Diameter,  $6\frac{1}{2}$  inches; weight, 6 ozs.

London Hall Marks of the year 1893. Makers' mark, M.B. over A.I.

A cross patée is engraved on the rim.

5. *A Paten of Silver*. Diameter, 6 inches; weight, 5 ozs.

The marks are the same as on the last.

6. *A Chalice of Silver.* Height,  $7\frac{1}{2}$  inches; diameter of mouth  $3\frac{3}{8}$  inches, of foot 5 inches; weight, 14 ozs.

London Hall Marks of the year 1898. Makers' mark, H.P. & Co. (Hardman and Powell).

Inscribed under the foot, "In memory of T. T. Carter, for 35 years Sup. Gen. Confraternity Blessed Sacrament. R.I.P. Oct. 28, 1901."

The elliptical bowl is set in an engrailed calix chased with *fleurs-de-lis* within heart-shaped borders. The circular stem has a well-defined knop, chased with the leaves and fruit of the vine. The foot, which is quatrefoil, with the same number of lesser foils between the larger, is chased with a bold representation of the passion flower.

7. *A Paten of Silver, gilt.* Diameter,  $5\frac{1}{4}$  inches.

The same marks as on the last.

8. *A Pewter Flagon.* Height,  $12\frac{1}{2}$  inches.

No marks.

In 1663 the following item occurs in the Churchwardens' Accounts: "for changing y<sup>e</sup> old Communion flagon for a new one, 1<sup>sh</sup> 0<sup>d</sup>."

## HAM, ST. GEORGE.

1. *A Chalice of Silver.* Height,  $6\frac{1}{2}$  inches; diameter of mouth,  $3\frac{3}{8}$  inches; depth of bowl, 2 inches; weight, 10 ozs. 2 dwts.

London Hall Marks of 1889.

Inscription, inside of foot, "✠ For God and the Church of St George the Martyr, Ham, Christmas 1889."

2. *A Paten of Silver.* Diameter, 5 inches; height,  $\frac{1}{4}$  inch; weight,  $3\frac{1}{2}$  ozs.

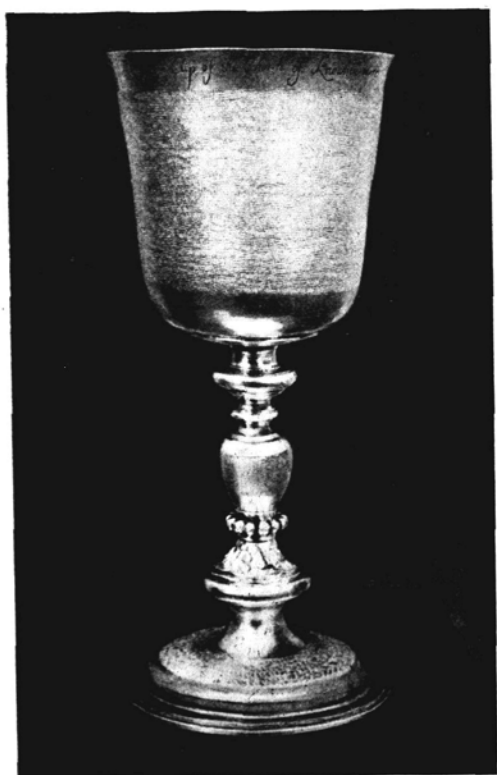
London Hall Marks of 1889.

Inscription, on reverse, same as on Chalice.

These vessels were given to replace a service of plated ware.

---





CHALICE, 1641, KNOWLTON.

## KINGSDOWN, ST. JOHN THE EVANGELIST.

The Church Plate, which is of no archæological interest, consists of two Chalices  $8\frac{1}{2}$  inches in height, inscribed on their feet, "St John the Evangelist, Kingsdown." A Paten, diameter 9 inches, and a Flagon, 12 inches in height, with the same inscription as upon the cups. All of plated ware.

---

## KNOWLTON.

1. *A Chalice of Silver.* Height,  $11\frac{1}{2}$  inches; diameter of mouth  $4\frac{1}{8}$  inches, of foot  $4\frac{3}{4}$  inches; depth of bowl,  $4\frac{3}{4}$  inches; weight, 26 ozs.

London Hall Marks of the year 1641. Maker's mark, F.T., in monogram, in a plain escutcheon.

This maker's mark occurs on the chalices at Eastry 1623, Mereworth 1624, Sevenoaks 1617. Mr. Jackson also notes an example as early as 1606, on the Watt Briant cup belonging to the Corporation of Portsmouth.

Inscribed in script round the upper part of the bowl, "Communion Cup of the Church of Knowlton, 1677."

This is a good example of the type of chalice sometimes called "Laudian." The bowl, which is shaped like an inverted truncated cone, has a slight lip, and is ornamented with a very wide band of hammered silver, on which are two ovals left plain. The knop of the tall baluster stem is also "frosted," and underneath the knop is a chaplet of bold bead-work supported by conventional foliage. The foot, which is slightly rounded up, is also "frosted" in the upper portion.

2. *A Paten-cover of Silver.* Height,  $1\frac{3}{8}$  inches; diameter,  $6\frac{1}{2}$  inches; diameter of button, 3 inches; weight, 11 ozs.

London Hall Marks of the year 1642. Maker's mark, R.W., with two pellets under the letters.

Inscribed in script on the face, "Cover of the Communion Cup of the Church of Knowlton, 1677."

The convex portion of the cover is hammered to resemble frosted silver.

3. *A Paten of Silver.* Diameter, 6 inches; weight, 7 ozs.  
London Hall Marks of the year 1856. Makers' mark,

E B  
& (for Barnard Bros.).  
J. B.

Inscribed on the under side in script, "To Knowlton Church |  
W. B. Delmar, 1857 | D. D. D. que."

---

### LANGDON EAST, ST. AUGUSTINE.

1. *A Chalice of Silver.* Height,  $6\frac{1}{2}$  inches; diameter  $3\frac{3}{4}$  inches, of foot 3 inches; depth of bowl, 4 inches; weight, 7 ozs.

London Hall Marks of the year 1562. Maker's mark not clear, †C.

The deep conical bowl is ornamented with a single band of conventional foliage between fillets filled in with hatching. The stem is divided by a plain triply-moulded knop, and the convex portion of the foot is engraved with a chevron-like pattern and *gouttes de sang*.

2. *A Paten-cover of Silver.* Diameter  $3\frac{1}{2}$  inches, of button  $1\frac{1}{2}$  inches; weight,  $2\frac{1}{2}$  ozs.

No Hall Marks. Maker's mark, a flower of five petals, with stalk and two leaves. This mark is found on the cups at Burmarsh and Stodmarsh. The letters E.L. are engraved on the button.

3. *A Paten of Silver.* Diameter, 10 inches; weight, 4 ozs.

London Hall Marks of the year 1675. Maker's mark indistinct, (?) V.B., with a mullet over the letters.

Inscribed: "Ex dono Streynsham Master, 1675."

The arms of Master, "(Azure) a fess embattled between three griffins' heads erased (or)."

4. *A Flagon of Silver.* Height,  $6\frac{3}{4}$  inches; diameter  $3\frac{1}{2}$  inches, of foot  $3\frac{1}{2}$  inches.

London Hall Marks of the year 1775. Maker's mark, W.B.

A small tankard with domed hinged cover. On the drum is the following inscription, "*In memoriam Carissimi Fratris et Sororis*," with the sacred monogram and cross surrounded by a wreath of thorns.

---

## LANGDON, WEST, ST. MARY.

The Church was destroyed by fire 1 November 1906. The Communion Plate and Registers were, however, saved, but the former are devoid of interest, and consist of an Electro-plated Chalice and Paten, and a Pewter Alms-plate.

---

## MONGEHAM, GREAT, ST. MARTIN.

1. *A Chalice of Plated Ware.* Height,  $8\frac{3}{4}$  inches; diameter of mouth  $3\frac{1}{4}$  inches; of foot  $4\frac{1}{4}$  inches.

This cup has a wineglass-shaped bowl on a baluster stem, and raised moulded foot.

The sacred monogram is engraved on the bowl.

2. *A Paten of Plated Ware.* Diameter, 10 inches.

The sacred monogram, etc., is engraved in the centre of the field.

3. *A Flagon of Plated Ware.* Height, 11 inches.

4. *A Paten, gilt, of Plated Ware.* Diameter,  $5\frac{1}{2}$  inches.

A flat disc, with the sacred monogram, etc., engraved on the very slightly convex side.

---

## NORTHBOURNE, ST. AUGUSTINE.

1. *A Chalice of Silver.* Height,  $8\frac{1}{2}$  inches; diameter of mouth  $4\frac{3}{8}$  inches, of foot 4 inches; depth of bowl,  $5\frac{1}{4}$  inches; weight, 16 ozs.

London Hall Marks of the year 1709. Maker's mark, Lo., with a key over the letters and a *fleur-de-lis* below, for Nath. Lock; entered 1698 (Jackson, p. 153).

Inscribed in script round the centre of the bowl, "This Communion Cup belonging to the Parish of Northbourne, 1709."

The deep bowl, which is considerably splayed at the lip, is supported by an abnormally thick and clumsy stem, which swells out below its plain round knob into a plainly-moulded foot.

2. *A Paten-cover of Silver.* Diameter,  $7\frac{3}{8}$  inches; weight,  $10\frac{1}{4}$  ozs.

London Hall Marks of the year 1824. Maker's mark, W.S., in an oblong stamp (probably for William Sutton).

A plain plate with a moulded edge.

3. *An Alms-dish of Silver.* Diameter, 8 inches; weight, 11 ozs.

London Hall Marks of the year 1787. Maker's mark nearly obliterated, (?) H.C.

Inscribed on the reverse, "Given to the Church of Northburn near Deal in Kent for the use of the Communion, A.D. 1787, by Tho. Hutchesson, Vicar."

Quite plain, with a triply-moulded edge. The donor was also Rector of Elmstone, and was Vicar of Northbourne from 1772 until his death in 1789.

4. *A Flagon of Silver.* Height,  $12\frac{1}{2}$  inches; diameter of mouth  $4\frac{3}{8}$  inches, of foot  $7\frac{1}{2}$  inches.

London Hall Marks of the year 1774. Maker's mark, C.W., in a plain oblong stamp (probably the mark of Charles Wright).

Inscribed on the drum, "This Flaggon presented to this | Parish Church of Norburne A.D. 1775 | by Mary Parker at the Desire | of her late Father | The Rev<sup>d</sup> George Shocklidge | Inducted here April 27<sup>th</sup> 1723 | Died here Feb<sup>ry</sup> 7, 1772."

5. *A Chalice of Silver.* Height,  $5\frac{1}{8}$  inches; diameter of mouth 3 inches, of foot  $3\frac{1}{2}$  inches; weight, 7 ozs.

London Hall Marks of the year 1894. Makers' mark, S.B. over F.W., in a four-lobed stamp.

The shallow conical bowl, which is gilt inside, is supported on a hexagonal stem with a plain sexfoil foot, on which is inscribed, "Given by H. W. Wyborn, Churchwarden, 1894."

#### RINGWOULD, ST. NICHOLAS.

1. *A Paten of Silver.* Height,  $2\frac{1}{4}$  inches; diameter of mouth and foot,  $8\frac{1}{4}$  inches; weight, 13 ozs.

London Hall Marks of the year 1710 (higher sterling). Maker's mark, B.O., with some object undecipherable below and above the letters (perhaps the mark of John Bodington); entered 1697.

Inscribed, "For ye yous of y<sup>e</sup> parish of Ringwoold Ric<sup>h</sup> Brett, Church-Warden, March y<sup>e</sup> 22, 1711/12."

A plain paten, with moulded edge.



ALMS-DISH, 1669, ST. NICHOLAS, RINGWOULD.

2. *An Alms-dish of Silver.* Height, 2 inches; diameter, 12 inches; weight, 21 ozs.

London Hall Marks of the year 1669. Maker's mark, W.C., with a crescent below.

Inscribed on the base, "The gift of my brother Mr John Dawling to Mary Dawling 1743," and "The gift of Mr<sup>s</sup> Hoult to Mr John Monins 1770," and on the side, "The gift of the patron, John Monins, Esq<sup>re</sup>, to the Parish Church of Ringwould 1795."

This is a very handsome dish, having a cable moulding round its edge, and its sides richly embossed with flowers and animals—lion, stag, and dog. On a lozenge within mantling are the arms of Mary Dawling, "Ermine, on a bend three acorns." On the reverse are the letters "R. & E.D.," and "19 oz. les 1<sup>dwt</sup>."

The donor, John Monins, Esq., of Canterbury, was the second son of Mary the daughter and heiress of the Rev. John Dawling by her husband the Rev. Richard Monins, sometime Master of the King's School, Canterbury, and Rector of Ringwould.

3. *A Chalice of Silver.* Height, 8½ inches; diameter of mouth 3¾ inches, of foot 3½ inches; weight, 11 ozs.

London Hall Marks of the year 1846. Maker's mark, B.S. (Benj. Smith?).

Inscribed under the foot, "The gift of the Rev<sup>d</sup> John Monins, Rector, to the Parish of Ringwould, 1853."

The plain wineglass-shaped bowl is supported by a stem, with a plain round knop and simply-moulded foot.

The donor was Rector of Ringwould from 1811 to 1853.

4. *A Flagon of Base Metal.* Height, 11 inches.

Inscribed as the last.

5 and 6. *Two Beaker-shaped Cups of Base Metal, with wooden bases.* Height, 3¾ inches; diameter of mouth 3 inches, of foot 2½ inches.

Inscribed: "The gift of the | Patron | John Monins, Esq. | to the Parish Church of | Ringwould | 1795."

In 1618 the Church Wardens made the following presentment at the Archdeacon's Visitation: "We have not a flagon of pewter or standing pot of metal to set the wine in on the Communion table, which we bring in a sweet and clean bottle of glass" (*Detecta et Comperta*).

## RIPPLE, ST. MARY THE VIRGIN.

1. *A Chalice of Silver.* Height, 8 inches; diameter of mouth  $3\frac{3}{4}$  inches; of foot  $3\frac{3}{4}$  inches; weight,  $14\frac{1}{2}$  ozs.

London Hall Marks of the year 1834. Maker's mark, R.S. (doubtful).

Inscribed: "The gift of the | Earl of Hardwick | of Wimpole | Cambridgeshire."

This cup, which is of the early nineteenth-century type, has a bulbous bowl, engraved with cross and nails, *en soleil*, and the above inscription. The stem has a plain annular knop.

2. *A Paten of Silver.* Height,  $2\frac{3}{4}$  inches; diameter of face  $8\frac{3}{4}$  inches; of foot  $3\frac{1}{2}$  inches; weight, 24 ozs.

The marks are the same as on the chalice, with the addition of "Makepeace, London," stamped on under side.

Inscribed on the foot, "The Gift of | John Baker Sladen | of Ripple Court."

In the centre of the face is the sacred monogram, etc., as on the chalice. The edge is moulded and shaped.

The following account of the above vessels is given on a piece of parchment inserted at the end of the earliest Register Book of the Church [1563]:—

"1835. N.B.—It having appeared by the Registers in this Book that the ancestors of the present Earl of Hardwick of Wimpole in Cambridg<sup>e</sup>, lived here, and that one\* of them by legacy gave to the Church (A.D. 1703) a piece of plate. The Rector wrote to the noble Earl stating this fact, who liberally placed at the Rector's disposal the sum of £17 under the condition and for the purpose mentioned in the memorandum following. *Vide* the cover of this Register Book."

[This piece of parchment was put in here in April 1835 for the purpose of recording the gift of the plate, *memoriâ custodire* B. Mandale.]

On the inside of the cover, at the end of the Register: "N.B.—I applied to Lord Hardwick, & subjoin a memorandum, & in 1837 I called at Covington (?) and saw the patina in that Church.

"*Memorandum.*—In the year of our Lord 1835 the Earl of Hardwick presented to this Parish a new Sacramental Cup on condition that an ancient piece of plate (patina) given by an ancestor to this Church in 1703 should be deposited in his Lordship's Parish Church of Wimpole, Cambridge."

\* The donor's name as recorded on the plate was Elizabeth Yorke.



"John Baker Sladen, Esq., of Ripple Court, giving at the same time a silver plate for the Sacramental Bread. Blain Mandale, Rector of Ripple, April 1835."

"The Rector, in April 1835, had a suitable Oaken Box lined with green cloth made to keep the plate in, for which was paid the sum of £1 . 2 . 6, and he hopes the future Rector & Churchwarden will greatly esteem and carefully preserve the same and its contents as a memorial of the piety of the donors P. Earl of Hardwicke & John Baker Sladen, and of their goodwill towards the Church and parish of Ripple."

### SANDWICH, ST. BARTHOLOMEW'S HOSPITAL.

1. *A Chalice of Silver.* Height,  $5\frac{1}{4}$  inches; diameter of mouth  $3\frac{1}{2}$  inches, of foot  $3\frac{3}{4}$  inches; weight, 7 ozs.

Marks obliterated, but the cup was ascribed by Canon Scott Robertson to *circa* 1600.

Inscribed upon the bell-shaped bowl, "To the Pious Memory of the Donors, St Bartholomew's Hospital, 1784," also the letters A.C., somewhat rudely engraved. At the base of the bowl is a rather coarsely-executed reed moulding, below which is a collar, to which the foot is united. The cup may have been remade at the date it was given to the Church, for the bowl appears to have been re-hammered, causing the obliteration of the plate marks, and it is probable that the stem was removed at the same time.

2. *A Chalice of Plated Ware.* Height,  $5\frac{3}{4}$  inches; diameter of mouth  $5\frac{3}{4}$  inches, of foot  $3\frac{1}{4}$  inches.

The shallow bowl is gilt inside; the stem has a large shaped knop, supported by a plain circular foot.

3. *A Paten of Silver.* Diameter, 5 inches; weight, 4 ozs. London Hall Marks of the year 1904.

Inscribed on the under side, "From G.R. & H.R., mindful of great loving kindness, June 1904."

4. *A Paten of Pewter.* Diameter, 8 inches.

A salver on three legs, with a shaped edge. Within a circle in the centre of the field is the following legend: "Lord evermore give us this Bread.—St John, vi., 34."

Inscribed underneath, "St Bartholomew's Hospital, 1784." There are no marks.

5. *An Alms-dish of Pewter.* Diameter, 8 inches.

Marks, a griffin's head crowned, also the word "Richard," the rest obliterated.

In the centre is a raised boss round which is the legend, "He that giveth unto the poor shall not lack.—Proverbs xxvii., 27." On the reverse, "St Bartholomew's Hospital, 1784." The sides are octagonal.

6. *A Flagon of Plated Ware.* Height, 10 inches.

Ewer shaped, with hinged lid, spout, and handle, all quite plain.

### SANDWICH, ST. CLEMENT'S.

1. *A Chalice of Silver.* Height, 7½ inches; diameter of mouth 4½ inches, of foot 4 inches; weight, 16 ozs.

No marks.

Round the upper part of the bowl is the following inscription: "THIS IS THE COMVNĪO COUP S. CLEMĒS." The sides of the deep bowl are slightly concave, splaying out towards the lip. The inscription round its upper part is on a hatched ground, between fillets filled in with hatching. At the base is a bead ornament between raised moulding. The stem is practically non-existent, as the foot springs from a bead moulding at the base of the bowl, which was probably once part of the knop. After swelling out to a vertical edge, ornamented with the bead, it takes a convex form with a vertical reed moulding at its outer edge. Probably of the same date as its cover, viz., 1577.

2. *A Paten-cover of Silver.*

No marks.

Inscribed on the button, "S.C., 1577." The rim is of iron.

3. *A Paten of Silver.* Diameter, 9½ inches; weight, 15 ozs.

No Hall Marks. Maker's mark, R.B., in an oblong with the corners cut off.

In the centre of the field is the sacred monogram, etc., over which is inscribed: "St Clement's, Sandwich," and below, "*In honorem dei Salvatoris | in usum mensæ mysticæ | multiplicis in Indignum misericordiæ memor | Hocce Grati Animi Pignus | Humillime Dicat Consecrata | IM | Hujus Ecclesiæ Vicarius An. Dom. 1729.*"

The Rev. John Martin was Vicar of St. Clement's from 1714 until his death in 1742. He was buried near the altar rails of his Church,

4. *A Bowl of Silver.* Depth,  $4\frac{3}{4}$  inches; diameter, 9 inches; weight, 31 ozs.

London Hall Marks of the year 1744. Maker's mark, B.W. in script capitals, in a two-lobed stamp (the mark of Benjamin West); entered 1739 (Jackson).

Inscribed on the side, within a wreath, "Deborah Bean, widdow, many years midwife of this Corporation, which office she executed by the Divine Asstance (*sic*) with generall aprobation & success, out of a tender regard for our Holy Religion left this Bason for the Pious use of Christian Baptism to the Parish Church of St Clement in Sandwich in the year of our Lord 1744."

5. *A Paten of Silver.* Diameter,  $6\frac{1}{8}$  inches; weight, 5 ozs.

London Hall Marks of the year 1872.

Engraved on the face, with the Crucifix on an anchor, and the letters M.C.Y. repeated three times.

6. *A Flagon of Base Metal.* Height,  $15\frac{3}{4}$  inches; diameter of mouth  $4\frac{3}{4}$  inches, of foot  $7\frac{1}{8}$  inches.

### SANDWICH, ST. MARY THE VIRGIN.

1. *A Cup, with Cover of Silver.* Height  $4\frac{3}{4}$  inches, of the cover  $2\frac{1}{4}$  inches; diameter of mouth  $5\frac{1}{2}$  inches, of foot 4 inches; depth of bowl,  $1\frac{1}{2}$  inches; weight of cup  $19\frac{1}{4}$  ozs., of cover  $5\frac{1}{4}$  ozs.

Marks, (1) a pomegranate; (2) a dimidiated ship and lion (?); (3) a cross pattée flory.

This cup has a wide, shallow, straight-sided bowl resting on a conical stem and foot. Round the bowl, in Tudor lettering, on a hatched background, are the words, "THIS IS THE COMMUNION COVP."

This interesting vessel resembles in shape two covered alms-basins at Rochester Cathedral which bear the London Hall Marks of the year 1530, and is almost exactly like a cup at Wymeswold Church in Leicestershire, made in 1512, and engraved in the late Canon Trollope's *Church Plate of that County*, vol. i., p. 307. The inscription on the Wymeswold cup is "*Soli Deo Honor et Gloria.*" Another cup of similar form is in the collection of Sir Samuel Montagu.

It is probable that these cups were used in pre-Reformation times to hold the unconsecrated wafers, and not as the late Canon Scott Robertson supposed as *Ciboria* or *pixes* for the reservation of the Host.

The cover of the Sandwich cup has a double dome surmounted by a finial. It does not fit the Cup well, and is probably of later date. The inscription was probably added in Elizabethan times.



2. *A Flagon of Silver.* Height, 12 inches; diameter of mouth  $4\frac{1}{2}$  inches, of foot  $6\frac{1}{2}$  inches; weight, 41 ozs. 3 dwts.

London Hall Marks of the year 1738. Maker's mark, T.R. (for Thomas Rush); entered 1724 (Jackson).

A tall straight-sided tankard of the usual type, inscribed under the foot, "A gift to ye Parish Church of St<sup>t</sup> Mary the Virgin in Sandwich in Kent in ye year of our Lord 1738."

3. *A Paten of Silver.* Diameter,  $7\frac{1}{8}$  inches.

London Hall Marks of the year 1739. Makers' mark, C.S., P.D. (doubtful).

Inscribed on the under side, "A Gift to the Parish of St<sup>t</sup> Mary in Sandwich in Kent 1740."

4 and 5. *Two Alms-dishes of Silver.* Diameter,  $7\frac{7}{8}$  inches; weight, 10 ozs. 7 dwts.

London Hall Marks of the year 1751. Maker's mark, T.W. (for Thos. Whipham); entered 1739 (Jackson).

Inscribed on the under side, "St Mary the Virgin in Sandwich, Kent, 1758." The sacred monogram, etc., is engraved in the centre of the field.

6. *A Paten of Silver.* Height,  $1\frac{3}{4}$  inches; diameter 6 inches, of foot  $2\frac{1}{8}$  inches; weight, 7 ozs. 7 dwts.

London Hall Marks of the year 1761. Maker's mark, J.S., in an oval stamp (for John Swift); entered 1739 (Jackson).

7. *A Chalice of Silver.* Height,  $10\frac{1}{2}$  inches; diameter of mouth  $4\frac{1}{2}$  inches, of foot 5 inches; weight, 17 ozs. 11 dwts.

Marks the same as on No. 6.

This cup has a bell-shaped bowl, supported on a clumsy hollow stem and foot.

### SANDWICH, ST. PETER.

1. *A Chalice of Plated Ware.* Height, 9 inches; diameter of mouth  $3\frac{1}{2}$  inches, of foot  $3\frac{1}{4}$  inches.

The deep bowl is gilt inside, and supported on a plainly-moulded stem.

2. *A Paten of Plated Ware.* Diameter,  $6\frac{1}{2}$  inches.

On three legs, with a beaded edge.

3. A duplicate of the last.

4. *An Alms-dish of Plated Ware.* Diameter,  $7\frac{7}{8}$  inches.

5. *A Flagon of Plated Ware.* Height,  $11\frac{1}{2}$  inches.

A plain tankard.

6. *A Plate of Pewter.* Diameter,  $7\frac{1}{2}$  inches.

Marked, Temple (?) in London.

Inscribed, "St Peter's Parish."

## SHOULDEN, ST. NICHOLAS.

1. *A Chalice of Silver.* Height,  $7\frac{1}{2}$  inches; diameter of mouth  $3\frac{1}{2}$  inches, of foot  $3\frac{3}{8}$  inches; depth of bowl,  $4\frac{1}{4}$  inches; weight, 11 ozs.

London Hall Marks of the year 1631. Maker's mark, R.W., with a hare beneath the letters in a plain shield.

Inscribed round the foot, "Bought when James Den was Churchwarden."

A cup of good proportions, with straight-sided deep bowl with a slight lip and flat base. The stem is equally divided by a plain oval knop, and swells out to meet the bowl and foot; the latter is raised and elegantly moulded.

2. *A Paten-cover of Silver.* Height,  $1\frac{1}{8}$  inch; diameter of mouth  $4\frac{3}{8}$  inches, of foot  $1\frac{5}{8}$  inches; weight, 4 ozs.

The marks are the same as on the last.

Inscribed on the button or foot, "The Chalice for Sholden, 1631."

3. *A Credence Paten of Silver.* Diameter, 8 inches; weight, 12 ozs.

London Hall Marks of the year 1807. Makers' mark, P.B. over W.B., in a square stamp (the mark of Paul and William Bateman); entered 1805 (Jackson).

Inscribed round the first depression, "The Gift of the Rev<sup>d</sup> Montague Pennington, Vicar of Shoulden Church, for the use of the Communion, 1808."

4. *A Flagon of Silver.* Height,  $10\frac{1}{2}$  inches; diameter of mouth  $2\frac{3}{4}$  inches, of foot  $4\frac{1}{2}$  inches; weight, 21 ozs.

London Hall Marks of the year 1869. Makers' mark, J B B W in a four-lobed stamp.

A straight-sided vessel, with domed lid and R handle. Inscribed on the foot, "The Flagon for Shoulden, 1871." The sacred monogram, etc., is engraved on the side of the drum.

5. *A Paten of Silver.* Diameter, 5 inches; weight,  $3\frac{1}{4}$  ozs.

London Hall Marks of the year 1873. Maker's mark, J.C.S.

Inscribed, "Shoulden Church," and engraved with a cross pattée within concentric circles.

## SUTTON.

1. *A Chalice of Silver.* Height, 6 inches; diameter of mouth  $4\frac{3}{8}$  inches, of foot  $4\frac{1}{16}$  inches; weight, 9 ozs.

London Hall Marks of the year 1683. Maker's mark, T.C., with a fish above and a *fleur-de-lis* below the letters.

The bowl is shaped like an inverted truncated cone, with slightly concave sides, supported on a perfectly plain trumpet-shaped foot and stem.

2. *A Paten-cover of Silver.* Height,  $1\frac{1}{4}$  inches; diameter of face  $4\frac{3}{4}$  inches, of foot or button  $2\frac{5}{8}$  inches; weight, 5 ozs.

Marks the same as on the last.

The flat rim is engraved with a single line running round it on both sides. Four incised lines ornament the outside edge of the button, in the centre of which is the maker's mark.

3. *An Alms-dish of Silver.* Diameter,  $5\frac{1}{4}$  inches.

Marks the same as on No. 1.

4. *A Paten of Silver.* Height,  $1\frac{3}{4}$  inches; diameter,  $6\frac{1}{2}$  inches; weight, 8 ozs.

London Hall Marks of the year 1716 (higher sterling). Maker's mark, L.B., with a rose (?) beneath, and a crown above the letters.

A plain vessel with moulded rim, on a hollow cylindrical foot.

Inscribed on the face, "The gift of the Rev<sup>d</sup> Montagu Pennington, A.M., Perpetual Curate of Sutton, to the Parish of Sutton, 1817." Also on the under side, <sup>C</sup>S. M.

The donor was Vicar of Northbourne and Shoulden from 1806, and perpetual Curate of St. George's Chapel, Deal, from 1814 until his death in 1849.

## TILMANSTONE, ST. ANDREW'S.

1. *A Chalice of Silver.* Height,  $7\frac{1}{2}$  inches; diameter of mouth  $4\frac{1}{8}$  inches, of foot  $3\frac{3}{4}$  inches; weight,  $11\frac{3}{4}$  ozs.

London Hall Marks of the year 1761. Maker's mark, W.O.

The sacred monogram, *en soleil*, with a cross formée is engraved on the bowl, which is bell shaped, and supported by a rather clumsy stem divided by a plain round knop. The foot has an ogee outline.

2. *A Paten of Silver, with foot.* Height,  $2\frac{3}{8}$  inches; diameter  $7\frac{3}{4}$  inches, of foot  $3\frac{1}{4}$  inches; weight, 9 ozs.

London Hall Marks of the year 1703. Maker's mark, Pa., in a plain shield (Humphrey Payne).

Plain surface, with raised gadroon edge, and the same ornamentation round the foot.

3. *A Flagon of Silver.* Height,  $9\frac{1}{4}$  inches; diameter 3 inches, of foot 4 inches; weight, 17 ozs.

London Hall Marks of the year 1865. Maker's mark, A.S.

A small and plain modern tankard, with cross on the top of the hinged lid.

### WALDERSHARE, ALL SAINTS.

1. *A Chalice of Silver.* Height, 8 inches; diameter of mouth 4 inches, of foot  $3\frac{3}{4}$  inches; depth of bowl,  $4\frac{1}{8}$  inches; weight,  $12\frac{1}{2}$  ozs.

London Hall Marks of the year 1712 (higher sterling). Maker's mark, St.

Inscribed upon the bowl in script lettering, "*Deo & Eccles de Waldershare | hoc pio animo dicavit honoratissima | Domina Furnese Henrici Furn Baron<sup>a</sup> vidua | Mar: 30, 1713.*"

The straight-sided bowl has a lip and rounded base, supported on a plain stem which swells out from an oval knob to form a trumpet-shaped foot, which is simply moulded.

2. *A Paten-cover of Silver.* Height, 1 inch; diameter  $4\frac{7}{8}$  inches, of foot  $2\frac{5}{8}$  inches; weight,  $5\frac{1}{4}$  ozs.

Marks and inscription the same as on the last, with the exception that the date is omitted.

A plain vessel, with raised moulded edge and three concentric circles engraved on the foot.

3. *A Flagon of Silver.* Height, 10 inches; diameter of mouth  $3\frac{1}{2}$  inches, of foot  $5\frac{1}{2}$  inches; weight, 36 ozs.

Marks and inscription the same as No. 1.

A tall tankard, with domed lid, thumb-piece, and scroll handle. The sacred monogram, etc., is engraved on the drum, at the bottom of which is a raised moulding, from whence the hollow foot is widely splayed out.\*

\* This flagon, after having been lost for many years, was restored to the church in 1886.



4. *A Credence Paten of Silver.* Diameter,  $8\frac{1}{2}$  inches; weight,  $11\frac{1}{4}$  ozs.

Marks, inscription, and ornamentation the same as on No. 2.

5. *An Alms-basin of Silver.* Diameter, 10 inches; weight, 15 ozs.

Marks and inscription the same as on No. 2, with the addition of "Mar: 30, 1713" on the reverse.

The donor of the above vessels was Matilda, daughter of Sir Thomas Vernon, and widow of Anthony Balam, Esq., by her second husband Sir Henry Furnese of Waldershare. She had a daughter Matilda, married to Richard Edgcombe, afterwards created Lord Edgcombe.

In 1615 the Churchwardens made the following reply to one of the interrogatories of the Archdeacon: "As yet we have not such a flagon to set the wine in on the communion table, as by this [second] article is required, but we stand instead thereof a glass wicker bottle which we have always employed to that use."

#### WALMER, ST. MARY THE VIRGIN.

1. *A Paten of Silver, gilt.* Height,  $\frac{9}{11}$ ths of an inch; diameter, 6 inches; weight, 4 ozs. No marks.



This interesting Mediæval vessel was dated by the late Canon Scott Robertson *circa* 1485. It is saucer shaped, with a simple

moulding round the outer edge. The centre, a sunk sexfoil, is *repoussé* in the form of a sex-petalled rose, enclosing a sexfoil within which is a circle bearing the sacred monogram *thc*. It was perhaps not used as a paten originally.

2. *A Chalice of Silver.* Height,  $7\frac{7}{8}$  inches; diameter of mouth  $3\frac{3}{8}$  inches, of foot  $3\frac{1}{2}$  inches; depth of bowl,  $4\frac{1}{8}$  inches.

London Hall Marks of the year 1562. Maker's mark, perhaps a fish, but indistinct.

The deep conical bowl is gilt on the inside, and is ornamented outside with a double band of strap work. The stem, which has a small projecting collar near its junction with the bowl, is equally divided by a plain round knob between fillets, and has a small reed moulding to unite it to the foot, which is only slightly convex. This fine Elizabethan cup was not included in the chronological list of Church Plate, drawn up by the late Canon Scott Robertson.

3. *A Chalice of Silver.* Height,  $6\frac{1}{2}$  inches; diameter of mouth  $3\frac{3}{8}$  inches, of foot 3 inches; weight, 6 ozs.

London Hall Marks of the year 1784. Makers' mark, I.W. over T.W., with a *fleur-de-lis* over the letters (for John Wakelin and Wm. Taylor).

The wineglass-shaped bowl is fluted in its lower half; the plain upper portion is engraved with the following arms surmounted by a Baron's coronet and flanked by palm branches, "*(Azure)* on a fess wavy (*or*) a cross patté (*gules*), in chief three estoiles (*or*), impaling argent, on a bend cotised three bezants."

4. *A Chalice of Silver.*

A duplicate of the last.

These cups were presented to Walmer Church by Robert Banks Jenkinson, second Earl of Liverpool, in 1820, but bear the arms of his father Charles Jenkinson, the first Earl, when the latter was Baron Hawkesbury, 1786—1796. The arms on the sinister side are those of Catherine, daughter of Sir Cecil Bisshopp, the second wife of the first Earl of Liverpool.

The following minute is inscribed in the Vestry Book: "Oct<sup>r</sup> 27<sup>th</sup>, 1820, the Rev<sup>d</sup> Edw<sup>d</sup> Owen, Curate of the Parish of Walmer, having reported to the Churchwardens of the same Parish that the Earl of Liverpool had presented the Parish with two silver cups and a salver for the Communion Table of this Church, and they having communicated the same to the Parishioners in Vestry assembled this 27<sup>th</sup> Oct<sup>r</sup> 1820—Resolved unanimously that the Right Honble. the Earl of Liverpool be respectfully requested to accept the thanks of the Inhabitants of the parish of Walmer assembled in vestry for his Lordship's very handsome present."

5. *A Paten of Silver.* Diameter,  $6\frac{1}{8}$  inches; weight, 8 ozs. No marks.

Inscribed on the reverse, "MDCCLI Ex Dono Rev<sup>d</sup> Sayer Rudd, M.D., hujus Parochiæ Vicarii."

The paten has a shaped edge.

The donor, an M.D. of Leyden, was Curate of Walmer from 1742 to 1755. He was also Vicar of Westwell, to which parish he presented a paten in 1751.

6. *A Credence Paten of Silver, of oval shape,* 9 × 7 inches. Height, 1 inch; on four legs; weight, 13 ozs.

London Hall Marks of the year 1793. Makers' mark, I.W. over R.G., in a square stamp (for J. Wakelin and Robt. Garrard).

The sacred monogram, etc., is in the centre of the field.

7. *A Paten of Silver, gilt.* Weight, 5 ozs.

London Hall Marks of the year 1894. Maker's mark, G.L., in monogram. Stamped, Lambert, Coventry Street.

This is a facsimile of the Mediæval paten mentioned above.

Inscribed: "S<sup>t</sup> L.L.N.N., June 23, 1893."

Given to the Church in memory of Lieut. Nott, R.F.A., died June 23, 1893.

8. *A Flagon of Plated Ware.* Height,  $10\frac{1}{2}$  inches; diameter of mouth 4 inches, of foot 7 inches.

This is a handsome vessel of its kind, having a gadroon pattern on the hinged lid and round the foot. The sacred monogram is engraved on the side of the spout.

The Rev. C. Elvin, in his Records of Walmer, says that this vessel was purchased by the parish in obedience to the order of Archdeacon Croft in 1829 for the sum of £7 3s.

### WALMER, ST. SAVIOUR'S.

1. *A Paten of Silver.* Diameter,  $6\frac{3}{8}$  inches.

London Hall Marks of the year 1851.

Inscribed round the rim, "Lead me, O Lord, in Thy truth, and teach me," and on the under side, "Presented to St Saviour's Church, Lower Walmer, Easter, 1852."

Saucer shaped. In the centre is a sunk sexfoil enclosing a circle, within which are two intersecting equilateral triangles enclosing the sacred monogram.

2. *A Flagon of Silver.* Height, 11 inches; diameter of foot,  $3\frac{7}{8}$  inches.

Marks the same as on the last.

Ewer shaped, with spout and domed lid; the thumb-piece is an open loop of fine twisted cable. Inscribed round the centre of the bulb, between two moulded ribs, "Remember, O Lord, Thy tender mercies."

Mr. Elvin, in his Records of Walmer, says that the above vessels were presented by the parishioners to the Rev. D. B. Payne (now Vicar of St. George's, Deal, and for eighteen years Curate of Walmer) on his ordination to the Priesthood, who, however, declined the gift, and the vessels were then given to St. Saviour's.

3. *A Chalice of Silver.* Height,  $8\frac{1}{4}$  inches; diameter of mouth  $4\frac{1}{8}$  inches, of foot  $4\frac{7}{8}$  inches; depth of bowl,  $2\frac{3}{4}$  inches.

London Hall Marks of the year 1852.

The shallow bowl is supported on a hexagonal stem, divided by large knop with six lozenge-shaped facets and holes for jewels. The sacred monogram is engraved on the sexfoil foot.

4. *A Paten of Silver.* Diameter,  $7\frac{1}{8}$  inches.

London Hall Marks of the year 1877. Maker's mark, H.H.

A massive saucer-shaped vessel, with moulded rim. The sacred monogram is in the centre of the field.

#### WHITFIELD, ST. PETER.

1. *A Chalice of Silver.* Height,  $6\frac{1}{4}$  inches; diameter of mouth  $3\frac{1}{4}$  inches, of foot  $2\frac{3}{8}$  inches; weight, 8 ozs.

London Hall Marks of the year 1792. Maker's mark, G. (P) B.

On the eggcup-shaped bowl is the following inscription: "Presented by George Stringer, Esq<sup>re</sup>, to the Parish Church of Whitfield," and "1828," the latter on an escutcheon in relief.

2. *A Paten of Silver.* Height,  $1\frac{7}{8}$  inches; diameter  $5\frac{3}{4}$  inches, of foot  $2\frac{1}{2}$  inches; weight, 11 ozs.

London Hall Marks of the year 1863. I.S.H., with a crown above the letters.

Inscribed on the under side, "St Peter's Church, Whitfield | d.d. Rev<sup>d</sup> Walter Hamilton, Vicar | Easter 1892."

The edge of the face and of the circular foot are moulded and shaped, and the sacred monogram, *en soleil*, is engraved in the centre of the field.

3. *A Flagon of Silver.* Height to top of finial, 11 inches; diameter of mouth 3 inches, of foot 5 inches; weight, 30 ozs.

London Hall Marks of the year 1888. Maker's mark, G.G.

Inscribed under the foot, "Presented to | St Peter's Church, Whitfield | By | The Rev<sup>d</sup> Walter Hamilton, M.A., Vicar, 1888. The donor was Vicar of Waldershare and Whitfield from 1856—1898.

4 and 5. *Two Pewter Alms-plates.* Diameter, 10 inches.

Marks, "Superfine Hard Metal," a crowned X, "Made in London," and an escallop between "H<sup>y</sup> & R<sup>d</sup>" (above) and "Joseph" (below).

## WOODNESBOROUGH, ST. MARY THE VIRGIN.

1. *A Chalice of Silver.* Height,  $7\frac{3}{4}$  inches; diameter of mouth  $3\frac{1}{2}$  inches, of foot  $3\frac{3}{8}$  inches; depth of bowl, 4 inches; weight, 10 ozs.

London Hall Marks of the year 1586. Maker's mark, I.S., in monogram.

This mark occurs on a standing salt belonging to the Armourers Company, made 1588, and is also found on the chalice at Shadoxhurst, made 1562.

This is a good specimen of an Elizabethan cup. The deep, almost cylindrical bowl, is gilt inside, and is ornamented with a single belt of conventional foliage between interlacing fillets, with pendants where the fillets interlace. The stem is divided by a plain round knop, and the tongue moulding is on the edge of the convex foot, and also round the base of the bowl.

2. *A Paten of Base Metal.* Diameter,  $11\frac{1}{2}$  inches.

3. *An Alms-plate of Base Metal.* Diameter, 8 inches.

Inscribed, "Presented by Miss Holttum, 1867."

4. *A Flagon of Pewter.* Height, 12 inches.

No marks.

With spout and raised lid, surmounted by a finial.

### WORTH, SS. PETER AND PAUL.

1. *A Chalice of Silver.* Height, 8 inches; diameter of mouth  $3\frac{1}{2}$  inches, of foot  $3\frac{5}{8}$  inches; depth of bowl,  $3\frac{7}{8}$  inches; weight,  $8\frac{1}{4}$  ozs.

London Hall Marks of the year 1718 (higher sterling). Maker's mark much obliterated, but apparently L. and P E., with a cinquefoil above and below the letters (perhaps the mark of Timothy Ley); entered 1697.

Inscribed on the bowl, "The Parish of Worth in Kent."

The plain straight-sided conical bowl is supported on a stem divided by an oval knop, from whence it swells out to form the hollow trumpet-shaped foot.

2. *A Paten of Silver.* Height,  $2\frac{1}{8}$  inches; diameter  $7\frac{7}{8}$  inches, of foot  $3\frac{3}{8}$  inches; weight, 10 ozs.

London Hall Marks of the year 1768. Maker's mark, C.W., in a two-lobed shield (perhaps one of the marks of Charles Wright).

3. *A Flagon of Silver.* Height,  $11\frac{1}{2}$  inches; diameter of mouth 4 inches, of foot  $6\frac{3}{4}$  inches; weight, 48 ozs.

London Hall Marks of the year 1748. Maker's mark, H.P., with a mullet or rose under the letters in a three-lobed stamp (for Humphry Payne).

Inscribed on the front of the drum, "Deo Servatori," on an ornamental escutcheon, with a dove displayed surrounded by rays above, and a cherub's head below it, and supported by angels blowing trumpets. Under the foot, "Worth alias Word, Kent, 1748."

A tall straight-sided tankard, with domed lid, thumb-piece, and scroll handle, on a hollow foot well splayed out.

## CHURCH PLATE IN KENT.

## CANTERBURY CATHEDRAL.

SUPPLEMENTARY NOTE TO THE INVENTORY PRINTED IN  
 "ARCHÆOLOGIA CANTIANA," VOL. XXVII., PP. 262—272.

CERTAIN papers which have recently been disinterred from the presses in the Cathedral Treasury make it clear that the two pricket-candlesticks upon the altar and the large alms-dish (No. 17 in the article referred to above) do not antedate the Restoration Period, but were purchased of James Beacham, goldsmith, at the Rose in Cheapside, in the year 1663. The fate of the vessels mentioned in the inventory taken in 1634 is sufficiently explained by the following order of the Dean and Chapter,\* which probably was made in the year 1642:†—

Whereas the bleeding estate of the Kingdom of Ireland together with the lamentable condicion of this Kingdome of England do call for the help and assistance of all his Ma<sup>ties</sup> loyall & obedient subjects. We the Deane & Chapter being willing to express ourselves therein according to the utmost of our power and finding that the Church is much indebted by reason of diverse arreres of rent & quit rents and other great expenses occasioned by severall accidents, do now order and decree that in this case of extremity The great guilt bason & two faire guilt candlesticks w<sup>th</sup> one rich peice of imbrodered worke belonging unto this church shall be sold to th' best advantage as shall be thought fit by M<sup>r</sup> Deane & D<sup>r</sup> Jackson & the greater number of the prebendaries at home. And that thirty pounds of

\* The Chapter Act Books for this period are missing. The order referred to is a draft on a single sheet of paper, and is undated.

† Several statutes were passed for the "Speedy and effectual reducing of the rebels in His Majesty's Kingdom of Ireland" in January 1642, and a levy of £400,000 was decreed to be paid into the chambers of York and London. Dean Bargrave died early in the year 1643.

the money receaved by them for this plate worke shalbe allowed in one grosse sum towards the relief of our distressed Brethren in Ireland when the same shalbe lawfully demanded . . . and that the rest of the money receaved for the said plate and embroderie work shalbe ordered and disposed of as shall be thought most convenient by the Deane & the Chapter or greater part of them being w<sup>th</sup>in the precincts of the Church when any urgent occasion shall require the disposall thereof.

ISAAC BARGRAVE.  
 MERIC CASANBON.  
 THOM. JACKSON.  
 THOMAS PASKE.

JOHN JEFFERAY.  
 WILLIAM KINGSLEY.  
 SA: BAKER.

A further valuable piece of evidence as to the fate of the Church goods during the Commonwealth period is furnished by another paper from the same source as the above. This purports to be an inventory made by order of the Committee of Kent on October 12th, 1649, of goods delivered to the Committee, and of goods retained in the vestry of the Church. Among the latter are two gilt flagons, two gilt cups with the covers, one other gilt cup, two little gilt plates, and two large white plates. From the Minute Book now preserved in the Nonconformist Church in Guildhall Street, Canterbury, we learn that the Cathedral Communion plate was lent by the Sequestrators on May 19th, 1650, to the congregation which met for worship in the Sermon (Chapter) house.\*

With the exception of the "Howard" cup, which was presumably one of the three thus used by the Nonconformists, it appears that none of the vessels named, found their way back to the Cathedral Vestry. The flagons at present in use were made in the year 1664, but the Treasurers' accounts do not notice the purchase of these vessels.

The following is a transcript of the Inventory:—

October the xii<sup>th</sup> 1649.

Received of Robert Doe of the presincks of Christ Church Canterberie by us whose names are heare unto subscribed thes

\* "Upon the 19<sup>th</sup> of the 5<sup>th</sup> Month 1650. The Church agreed that they would make use of the plate (viz. 2 flaggons, 3 cupps, 2 large dishes, & a lesser gilded) wch was offered to the use of the Church by the Sequestrators." Printed by Mr. J. M. Cowper in the *Diocesan Gazette* for January 1895.



goods formerly beelonnge to the Deane and prebendaries of the sayd Cathedrall Chirch of Canterberie by virtue of a order from the Committee of Kent bearing date the [blank].

The goods are thes—

One Canapie of green and wyt satine with a grene and whyt silke fringe and lined with cheni satine.

One Carpite of purple viellvit with a silke and goold fringe lined with Calicoe formerly used as a carpite for the Altere.

One bible and a common prayer booke covered with purpull reliefe and bost with silver.

Twelke large turkiworke cushions.

And sixe smaller turkiwork Cushions.

Three Carpets two wooavd with birds of goold the othe pleane all ould and raged.

One Brase eggle formerly used in the quiere as a desk to ley a bible one.

One piece of large hanging one other pies of a lesser hanging carpite.

One ould carpit a foote cloth for the Allter formerly.

Receved by us—

JOHN POTTEN.

JOHN LEE.

Goodes left in the Vestri.

Two gilt flagons.

Two gilt cups with the covers.

One other gilt cupe.

Two little gilt plats.

Two large whit plats.

One wrought table cloth for the Comunion table.

One Carpit rought.

x Red cussiens 4 whit cussiions, 4 dim cussiions.

1 Pulpit Cloth and cussion.

ij little Velvit cushions.

A pulpit and some ould carpits.

iiij ould table cloths of diper & holland.

One old deske.

One large table cloth wrought with nedle (?) worlke for the Comunion table.

The nild wouth (needle wrought ?) table cloth M<sup>r</sup> Durrans bath in the sermon howse for the Comunion table theare.

At a Meeting of the trustees for Deanes and Chapters lands the 6<sup>th</sup> of March 1650:

Ordered that Capt<sup>n</sup> Sherman doe make a catalogue of all the Bookes in the liberarie at Canterburie and that hee take care for the speedie sendinge of them up to Surrey house in the ould Jewrie London.

JOHNSTOUN  
COLLONEL  
ROOLFE.

MAR. HILDERSONE.  
GEORGE LANGHAM.  
WILLIAM WYBERN.

Januarie 1656. Recieved of Rob<sup>t</sup> Doe a little velvit Cushion of purpell colere part of the goods left in the vesterie formerly beelonginge to the Dean and Chapter.

Received by mee JOHN DURANT.

ffor the Reverend ye Deane and the Prebends of Canterbury  
Apr. 16<sup>th</sup>, 1663.

	<i>li.</i>	<i>s.</i>	<i>d.</i>
A Bason gilt, w <sup>t</sup> ( <i>weight</i> ) 74 oz. halfe and halfe q <sup>r</sup> at 8 <sup>s</sup> per oz. . . . .	29	17	00
Two Chalices w <sup>t</sup> 71 oz. 3 q <sup>rs</sup> and 12 g <sup>r</sup> at 8 <sup>s</sup> 6 per oz. . . . .	30	10	6
Two Candlesticks Chast & gilt w <sup>t</sup> 131 oz. at 8 <sup>s</sup> 6 <sup>d</sup> per oz. . . . .	55	13	6
Two pattens w <sup>t</sup> 32 oz. halfe and 1 dwt. at 8 <sup>s</sup> per oz. . . . .	13	00	06
It. for the Cases . . . . .	2	15	00
It. for Gravinge the Bason . . . . .	00	03	06
	132	00	00

JAMES BEACHAM goldsmith  
At ye rose in Cheapside.

The Strainer Spoon (No. 19), which first appears in the inventory of 1745, was purchased in 1733 of Madame Ayers, and cost 7s. 6d., 3s. being charged for silver and duty and 4s. 6d. for making and gilding.

*Errata.*—In Vol. XXVII., p. 268, for the weight of No. 2, for 8½ ozs. read 18½ ozs., and for the weight of No. 3, for 9 ozs. read 19 ozs.

## CANTERBURY—THE CHURCH PLATE OF THE HOSPITALS OF ST. NICHOLAS AND ST. JOHN.

---

### ST. NICHOLAS HOSPITAL, HARBLEDOWN.

1. *A Chalice of Silver.* Height,  $7\frac{1}{2}$  inches; diameter of mouth  $3\frac{1}{2}$  inches, of foot  $3\frac{1}{4}$  inches; weight, 9 ozs.

No Marks.

This plain Elizabethan cup has a deep straight-sided bowl, which is shaped like an inverted truncated cone, supported on a stem equally divided by a plain annular knop. The foot is slightly convex, and the only ornamentation is a small reed moulding which marks the junction of the stem with the bowl and with the foot; on the under side of the foot is the word "NYCOLAS."

2. *A Paten-cover of Silver.* Height, 1 inch; diameter,  $3\frac{7}{8}$  inches, of foot  $1\frac{7}{8}$  inches; weight, 3 ozs.

No marks.

All quite plain.

In addition to the above vessels the Hospital possesses four ancient Mazer bowls. By the kindness of Mr. W. H. St. John Hope and the Society of Antiquaries I am able to give the following description, with illustrations, of these interesting vessels :\*—

1. Diameter,  $9\frac{1}{2}$  inches; depth, 3 inches; height,  $3\frac{1}{4}$  inches; height of cover,  $2\frac{1}{2}$  inches.

The bowl is a fine and well-preserved specimen of the mottled maple-wood, from which the mazer derives its name. The band is very narrow, silver-gilt, moulded, one  $\frac{1}{4}$  inch wide.

The print is of two dates. It consists of a circular silver-gilt medallion  $2\frac{3}{8}$  inches in diameter, representing a combat between

\* "English Mediæval Drinking Bowls called Mazers," communicated to the Society of Antiquaries by W. H. St. John Hope, M.A., 1887.

a lion and a dragon. The background is diapered with spirals of foliage. This clearly pertains to the end of the thirteenth century. It is held in place by a silver mount bearing a rudely-cut inscription round the rim: "BY ME WILLIAM SMYTHE GOD SAVE KINGE IAMES THE I Anno Dom 1603."

With this mazer is preserved a cover, which may or may not belong to it. It is a low conical one of wood, completely covered with painting in fair preservation. The subject is two lions, separated from each other by large flowering plants. The field is painted a dark colour, spotted all over with groups of three small white spots. Round the outer margin is a plain band, and a simi-



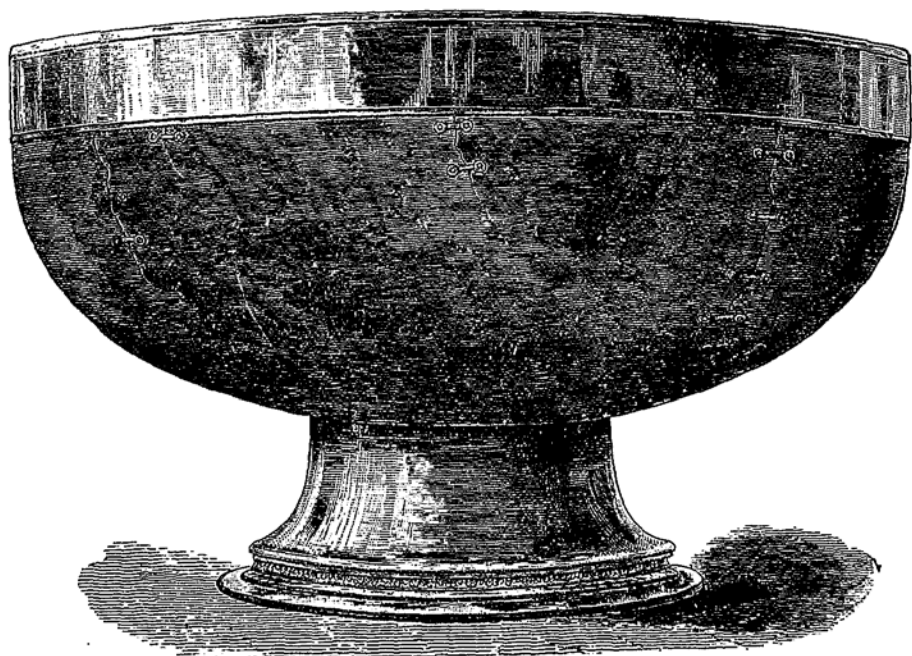
lar band with a scroll pattern runs round the summit. The inside is painted a bright red. The cover is lifted by a small stud of plain wood, now broken, and of no great antiquity.

2. Diameter of bowl,  $8\frac{3}{4}$  inches; depth,  $3\frac{1}{8}$  inches; height,  $5\frac{1}{4}$  inches; diameter of foot,  $4\frac{1}{8}$  inches; height,  $1\frac{3}{4}$  inches.

The bowl is of maple-wood, polished on the outer side. It has been repaired in eight places; five of them have the cracks crossed by a series of silver straps on both sides and rivetted through. These are apparently the results of an early injury, as the other

places are covered by ugly strips of silver gilt. The band is  $\frac{1}{8}$  inch deep outside and  $\frac{3}{4}$  inch inside. It is silver-gilt and perfectly plain.

The print is a nearly flat silver-gilt medallion  $3\frac{3}{8}$  inches in diameter, fastened to the bowl by forty-three pins. It bears a representation in *repoussé* work of an incident in the life of the famous Guy of Warwick, when the hero slew a dragon which was pursuing a lion, in consequence of which the lion followed him everywhere like a dog. In the print Sir Guy is sitting on his horse clad in mail armour, with a shield of the Beauchamp arms—



“A fesse between six cross-crosslets”—on his left arm, and piercing with a long lance the dragon. In front of the horse’s head is the lion, playing in front of him like a dog. The background is filled with trees. The ailettes appearing on the knight’s shoulders fix the date as *temp.* Edward II. Round the medallion is the legend in Lombardic capitals:—

+ GY DE WARWYC: ADANOVN:  
KECIOQCIS: LE DRAGOVN:

*i.e.*, Guy of Warwick is his name  
Who here slays the dragon,

This mazer has been mounted on a short foot at some subsequent date, probably *circa* 1430. It is of silver-gilt, and of simple design, the only ornament being a very narrow band of four-leaved flowers round the bottom.



3. Diameter of bowl,  $5\frac{3}{4}$  inches; depth,  $2\frac{5}{8}$  inches; height,  $2\frac{2}{8}$  inches.

The bowl is of maple, which in this instance is more streaky than usual. The plain silver band is very narrow, measuring only just over  $\frac{3}{8}$  inch outside, and  $\frac{1}{4}$  inch inside. One third of its circumference is broken away and lost.

The print is formed of a large oval crystal, about  $1\frac{1}{4}$  inches long by 1 inch high, enclosed in a simple silver-gilt setting. This stone is commonly known as Becket's shoe buckle. At what time it was inserted in the mazer is not known, but this crystal is almost certainly the one alluded to by Erasmus in his *Perigrinatio Religionis Ergo*.

This mazer has no hall marks and its date is uncertain, but probably fourteenth century.

4. Diameter of bowl,  $5\frac{5}{8}$  inches; depth,  $1\frac{1}{2}$  inches; height,  $1\frac{3}{4}$  inches.

The bowl is of maple-wood, and has been repaired by means of thin silver strips in two places. The plain silver band is  $\frac{5}{8}$  inch deep outside and  $\frac{1}{2}$  inch inside.

The print is a flat circular piece of silver, quite plain, with the exception of three concentric engraved circles. This mazer has no hall marks, and from its plain character is difficult to assign a date to. It may pertain to the early part of the fourteenth century.

### ST. JOHN'S HOSPITAL.

1. *A Chalice of Silver.* Height,  $6\frac{1}{4}$  inches; diameter of mouth  $3\frac{3}{4}$  inches, of foot 3 inches; weight, 9 oz.

No marks.

A good Elizabethan cup, with deep bell-shaped bowl, with sides slightly concave. Two bands of the usual type of foliage between fillets filled in with hatching, and interlacing four times, surround the bowl, which has a flattened base united by a reed moulding to a short stem equally divided by a small annular knop, and with the reed moulding marking the junction with the foot, which is only very slightly convex.

Also the following modern vessels of plated ware :—

2. *A Chalice.* Height,  $7\frac{1}{8}$  inches; with bulb-shaped bowl, gilt inside.

3. *A Paten engraved with a cross.*

4. *An Alms-plate, with sexfoil centre.*

5. *A Credence Paten on a raised central foot.*

6. *A Flagon, with Cover.*

In addition to the above vessels in the keeping of the Prior, the safe in the Hall contains three ancient mazers. These were examined by Mr. W. H. St. John Hope, who described them in his article on Mazers, communicated to the Society of Antiquaries in 1887, as follows :—

1. Diameter,  $6\frac{1}{2}$  inches; height,  $1\frac{1}{2}$  inches; depth,  $1\frac{3}{8}$  inches.

The bowl is a very shallow one, of maple-wood, repaired in two places by irregular plates of silver-gilt. The band is of silver-gilt and very narrow, being only  $\frac{7}{16}$  of an inch deep outside and  $\frac{1}{4}$  inch



within. It is quite plain, with the exception of an engraved line round its upper edge outside. The print is a flat silver-gilt medallion  $1\frac{1}{4}$  inches in diameter, with a representation in *repoussé* work of the Virgin and Child. The Blessed Virgin is represented crowned, and is sitting on a panelled seat. On either side is a graceful branched plant or tree, filling up the space between the figures, and a double circle enclosing the whole. Outside the circles is a narrow interval  $\frac{1}{8}$  inch wide,

through which pass thirteen small rivets to secure the print in the mazer. On the under side of the bowl is a thin brass plate fixed beneath the print by four pins. Date, *circa* 1340.

2. Diameter,  $6\frac{1}{4}$  inches; depth,  $1\frac{1}{4}$  inches.

The bowl is a beautifully mottled one of maple-wood, repaired in one place by a small triangular patch of gilt metal. The band is unfortunately lost. The print is a circular flat button of copper,  $1\frac{1}{4}$  inches in diameter, engraved with a large crowned heart, inscribed *thc*, the field being covered with a small branched pattern. All the engraved work is filled with enamel, the crown and letters with dull red, the remainder with blue-black. Date, late fourteenth century.



3. Diameter,  $4\frac{5}{16}$  inches; height,  $1\frac{7}{8}$  inches; depth,  $1\frac{1}{2}$  inches.

The bowl is of maple-wood, repaired in two places, and badly cracked in a third. The band is lost.

The print is a thin plate of silver-gilt,  $1\frac{1}{2}$  inches in diameter, slightly bossed up in the centre, and poorly engraved with a rose on a hatched ground. Part of one side has been broken away. The plate is now fastened down by six rivets around one half of its circumference only. The date of this mazer, in the absence of band and hall marks, is difficult to determine. The bowl has an early look about it, but the print, which may not be the original one, is clearly of sixteenth-century date, and perhaps Elizabethan.



The Hospital also possesses a large number of pewter vessels, of which, perhaps, the most worthy of notice are:—

*A Tankard.* Height,  $8\frac{1}{4}$  inches; diameter, 5 inches; with a lid, the hinge of which is broken.

Marks, R. B. in a lozenge and  $\phi$ , both twice repeated.

Inscribed: "The Gift of Robert Mascoll Esq. to St Johns Hospitall the 24<sup>th</sup> day of June 1659 \* ." And bearing the following arms: "4 Bars over all 3 escutcheons ermine."

*A Ewer-shaped Vessel with handle, without a spout.* Height,  $7\frac{1}{2}$  inches.

Engraved on the hinged lid, E. C.

*Three Small Latten Candlesticks on round raised bases.* Height, 7 inches.

No marks.

---

